



**POLITECNICO
DI TORINO**

Corso di laurea magistrale
in Architettura Costruzione Città
Dipartimento di Architettura e Design
Anno Accademico 2019-2020

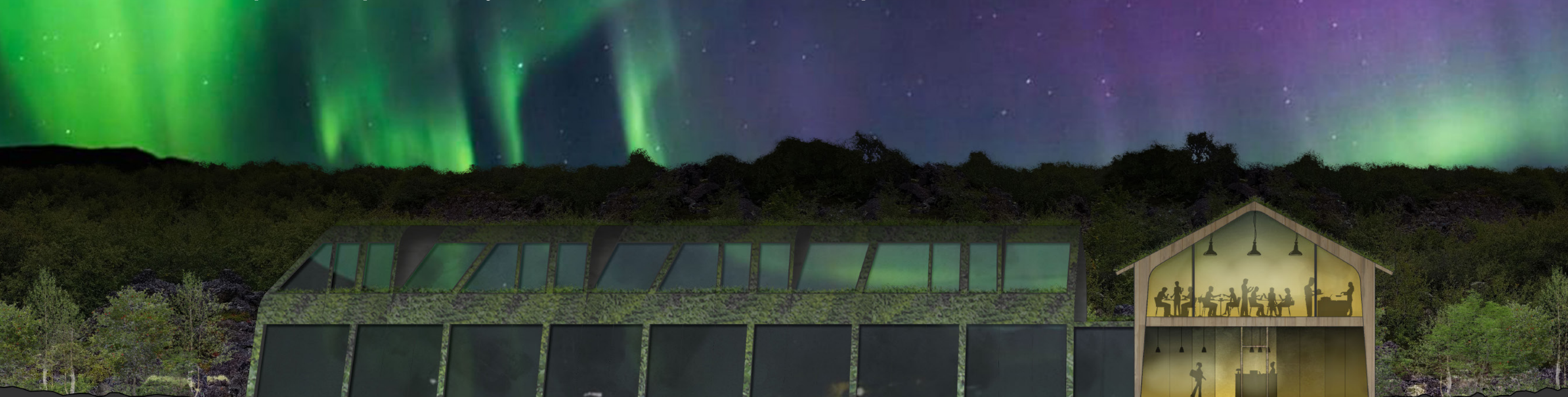
Candidato: Francesco Boetti
Relatore: Marco Trisciuglio
Correlatore: Sofia Nannini

Dialogo tra la natura e un'architettura islandese

“perché la lunghezza del verno, l'intensità del freddo, e l'ardore estremo della state, che sono qualità di quel luogo, mi travagliavano di continuo;[...]di modo che, né in casa né a cielo aperto, io mi poteva salvare da un perpetuo disagio.

Mi avveggo che [...]tanto impossibile il viver quieto in qual si sia modo, quanto il vivere inquieto senza miseria: e mi risolvo a concludere che tu sei nemica scoperta degli uomini, e degli altri animali, e di tutte le opere tue;”

Leopardi, Giacomo. Operette morali, Dialogo della Natura e di un Islandese (Liber Liber) (Italian Edition) (p.67). Liber Liber. Edizione del Kindle.





Reykjavík

Area concorso

Lago Mývatn

Vulcano Hverfjall





A photograph of a building at night, illuminated by warm lights, with a vibrant green aurora borealis (Northern Lights) visible in the dark sky above it. The building has a sign that reads "Vogafjós". Several cars are parked in front of the building.

Richieste concorso:

- Progettare una guest house
- 8-10 stanze doppie con bagno
- Vista su aurora boreale
- Cucina comune
- Salone comune
- Piscine termali
- Stanza per deposito bagagli

Committenti:

- Vogafjós Farm Resort



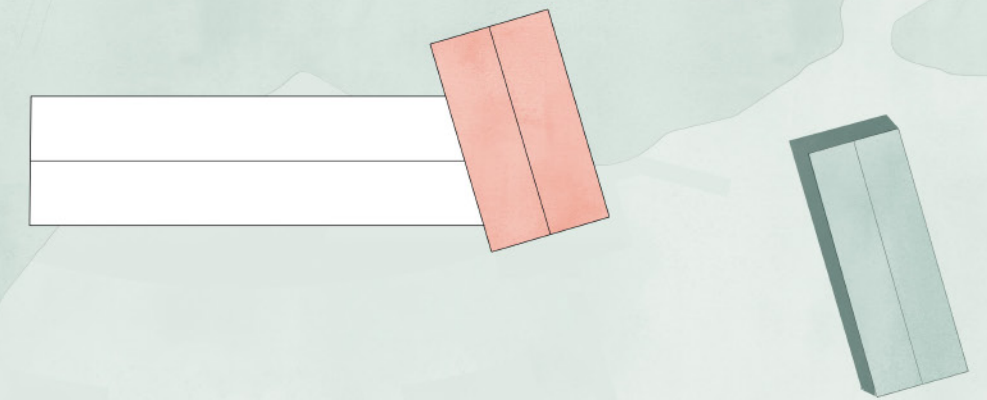


Lago Mývatn

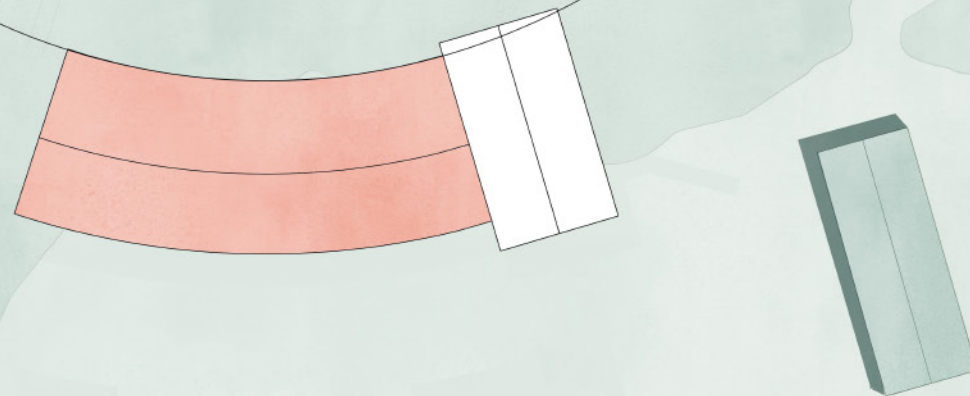
Fase 1
Corpo ad L con corte aperta



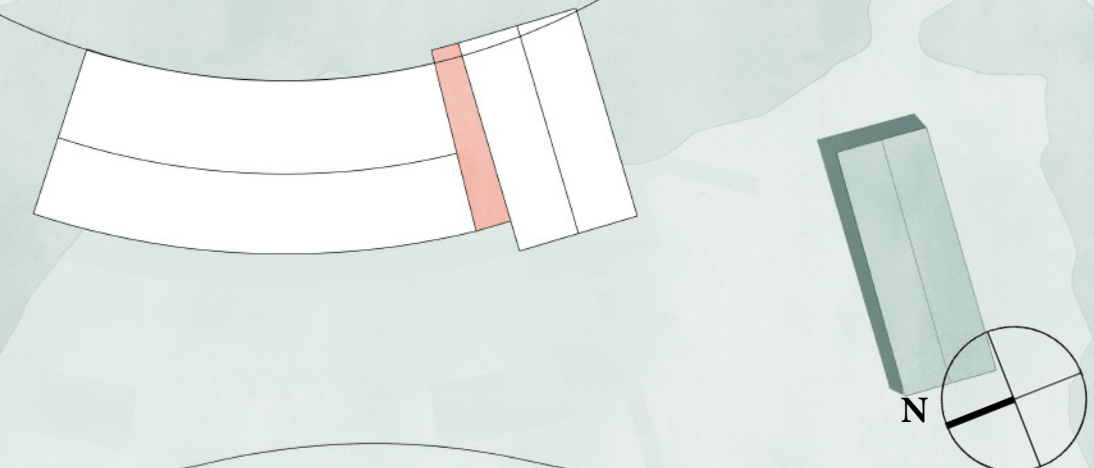
Fase 2
Rotazione verso strada

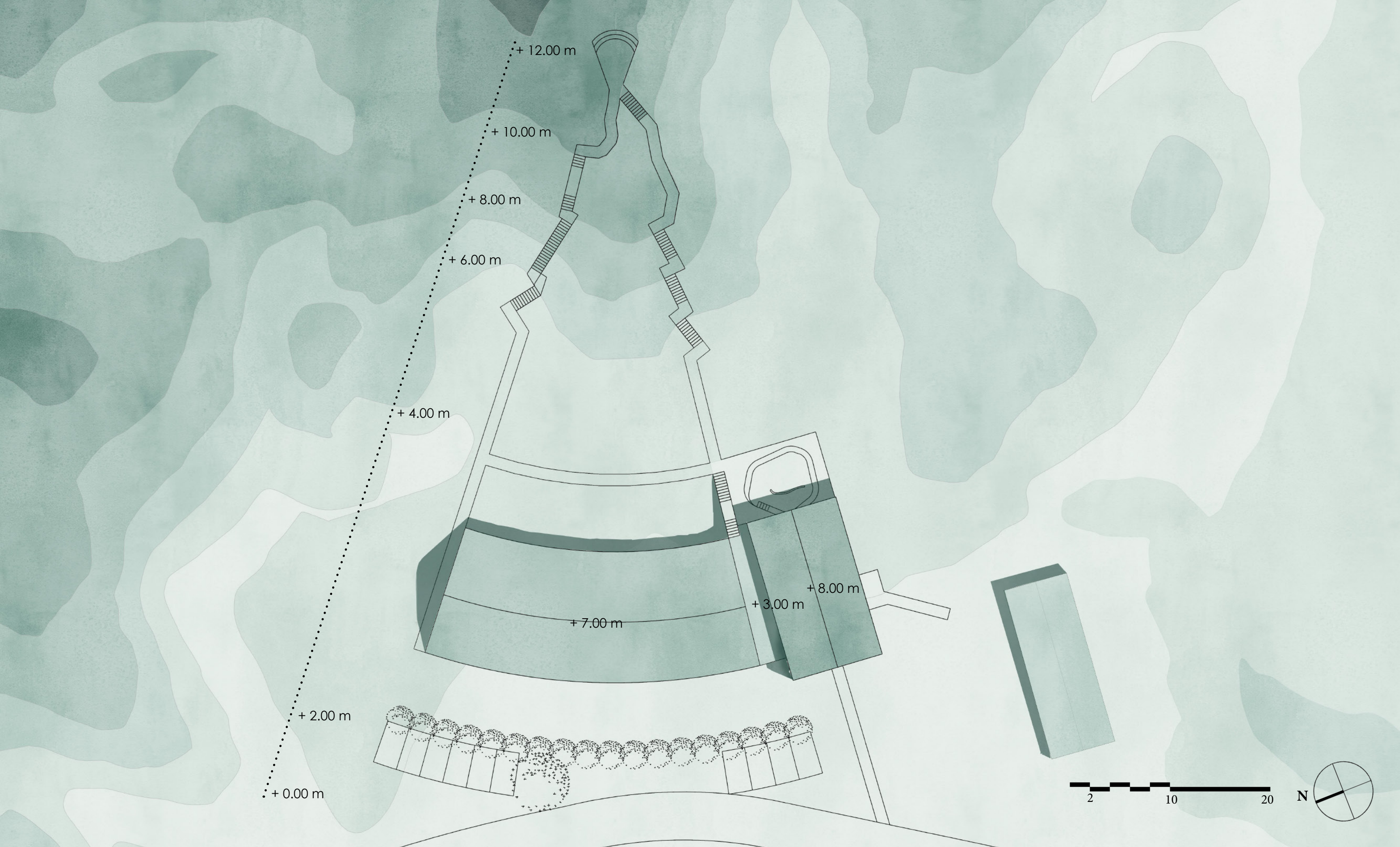


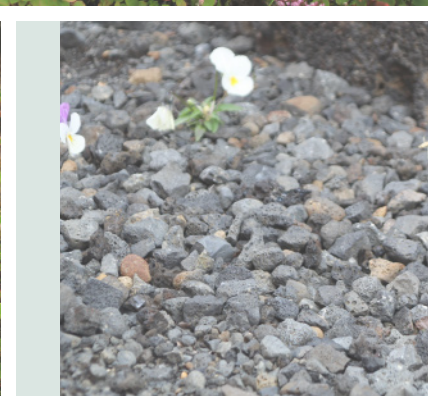
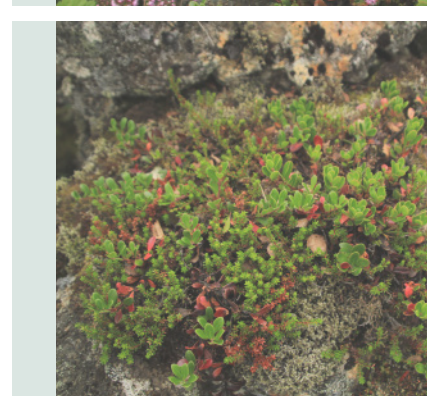
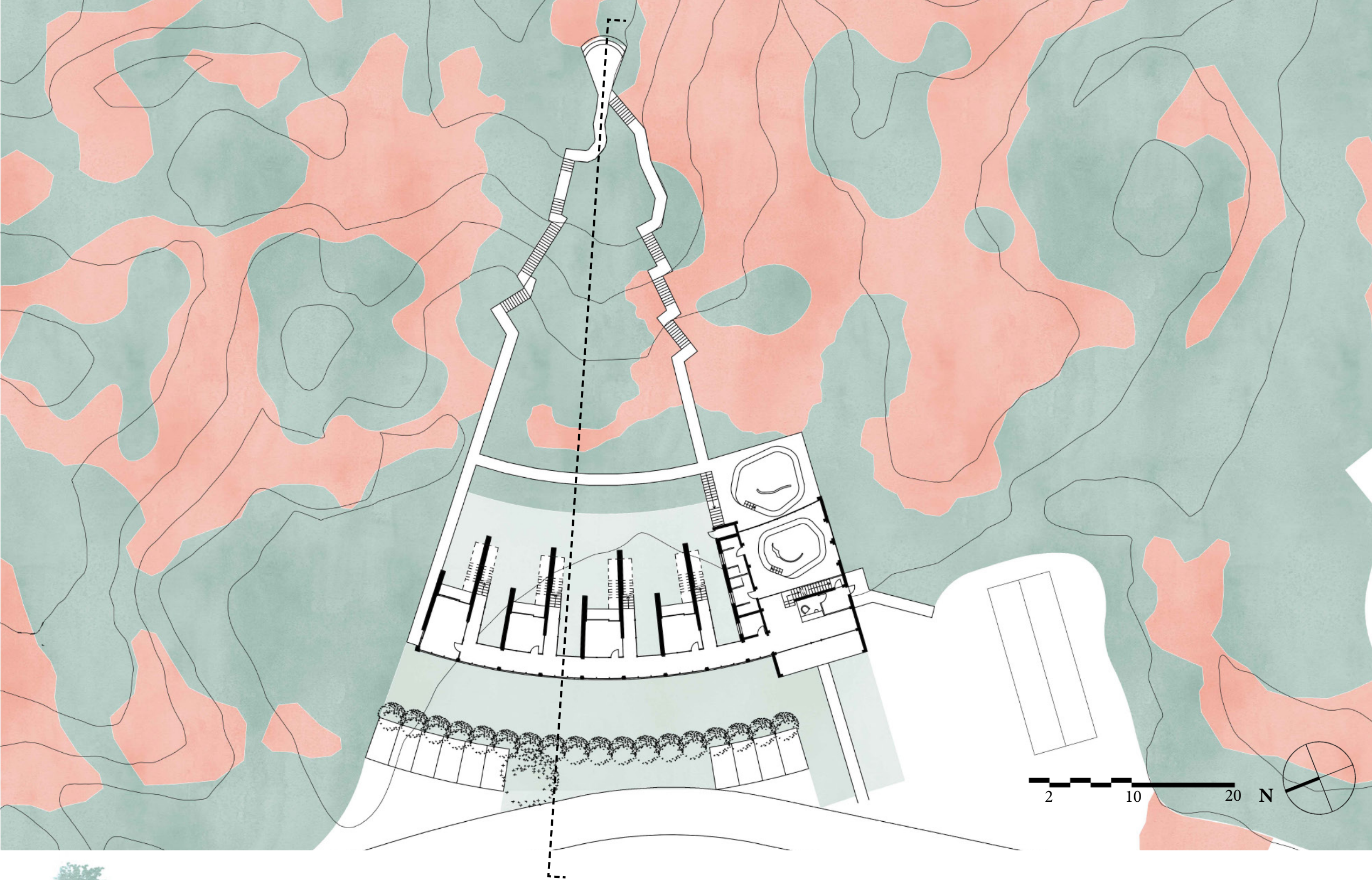
Fase 3
Connessione tra i due corpi



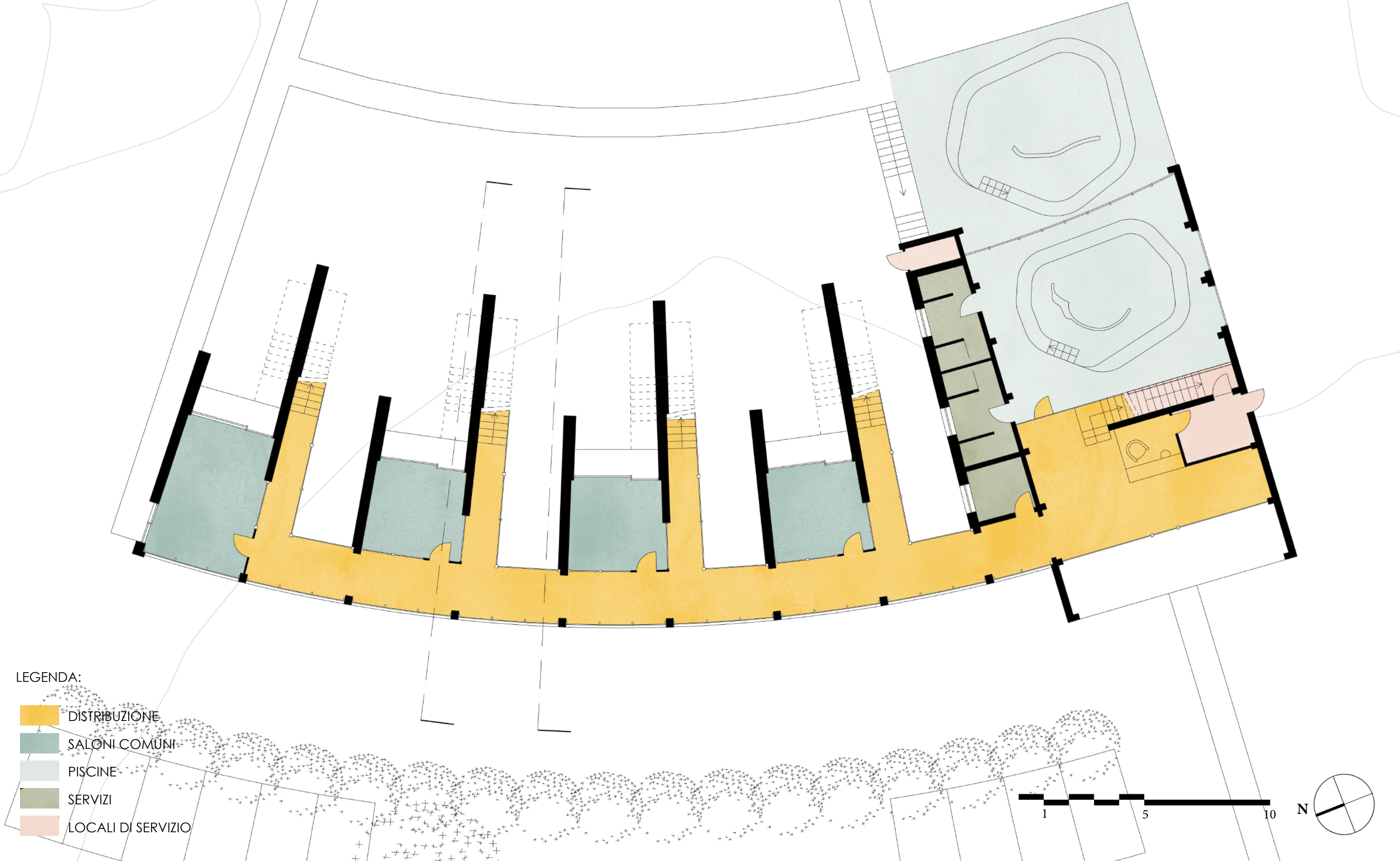
Fase 4
Volume di congiunzione servizi

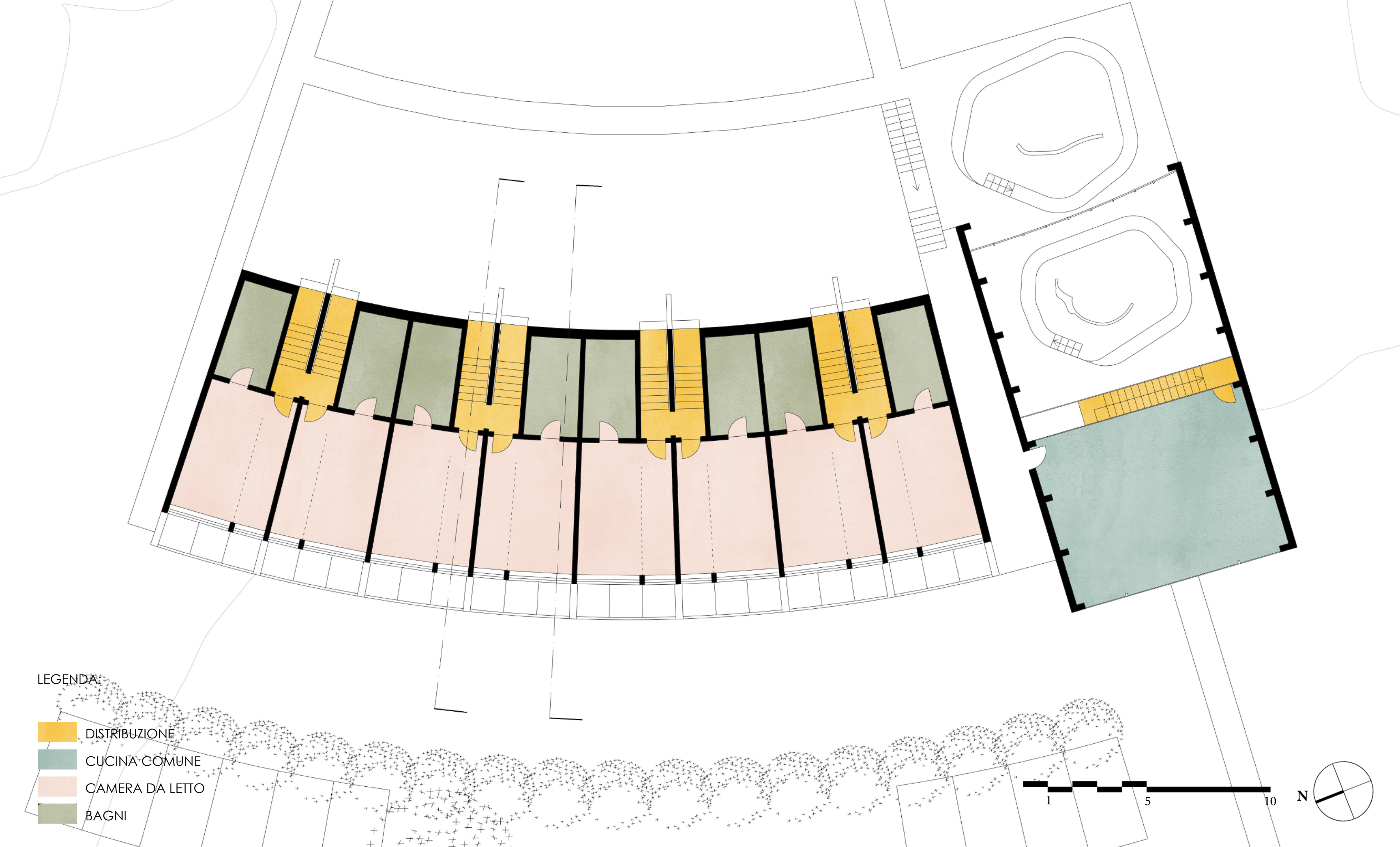






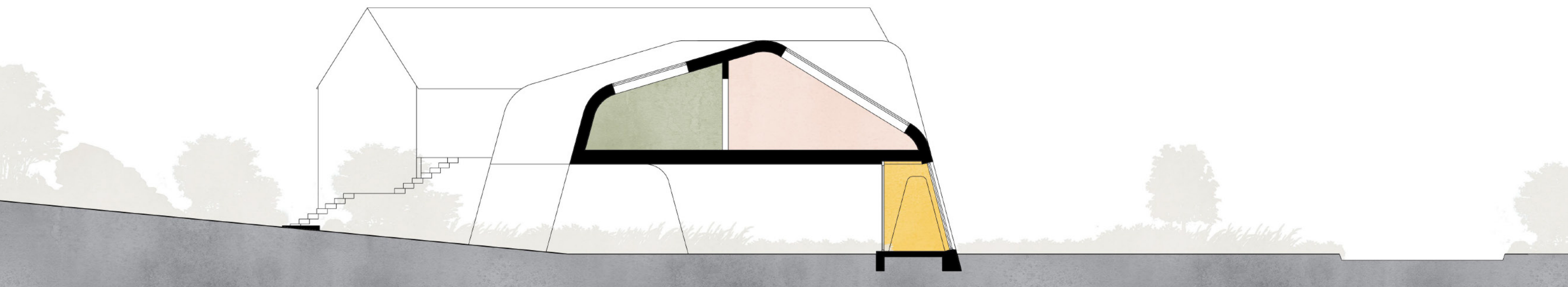
- LEGENDA:
- BOSCO
 - ROCCIA
 - GIARDINO





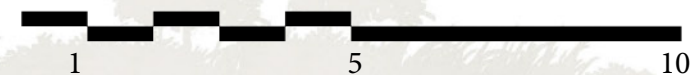
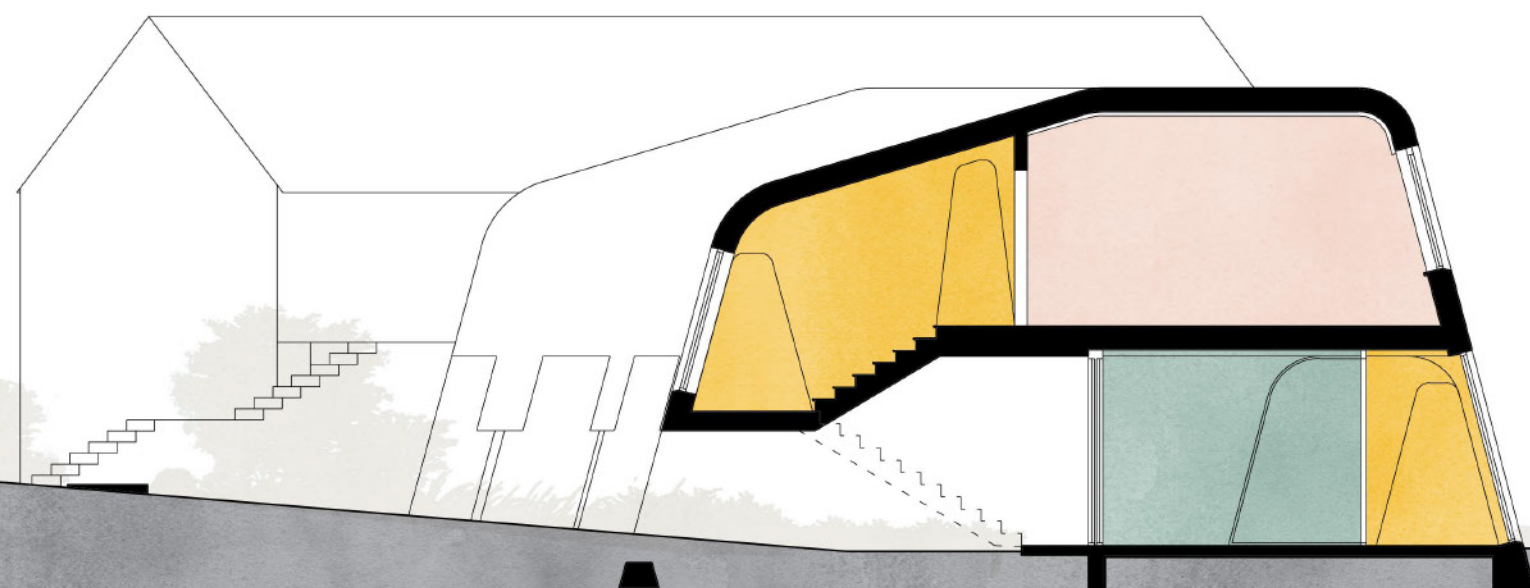
- LEGENDA
- DISTRIBUTIONE
 - CUCINA COMUNE
 - CAMERA DA LETTO
 - BAGNI





LEGENDA:

- DISTRIBUZIONE
- SALONI COMUNI
- CAMERA DA LETTO
- BAGNI



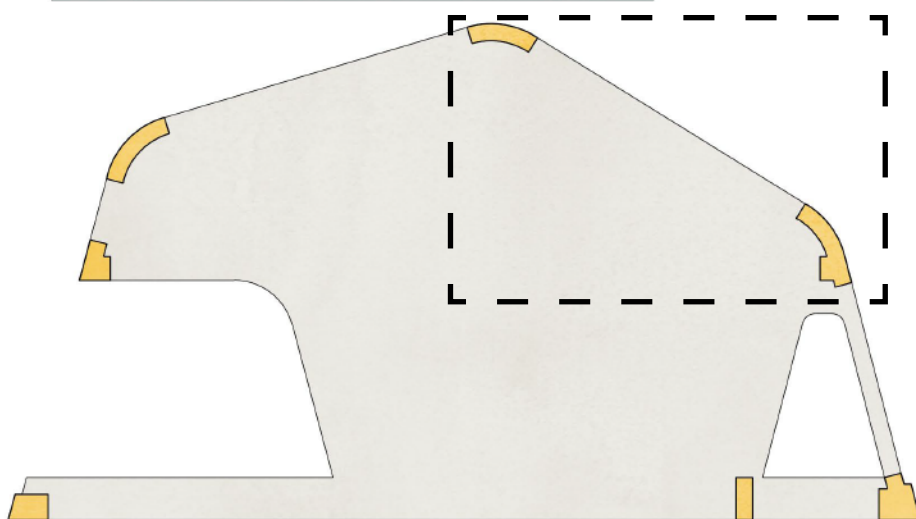
SETTO A



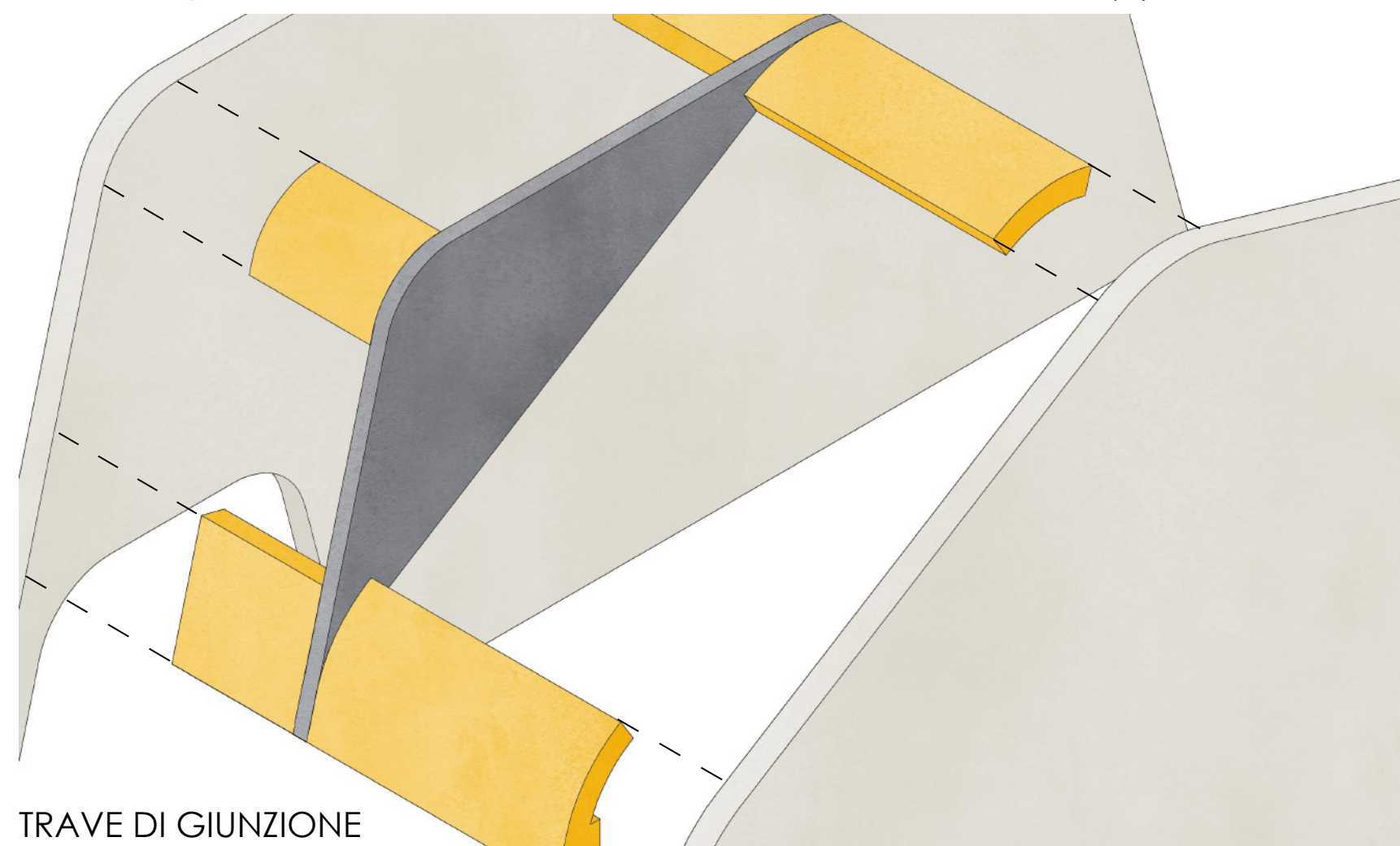
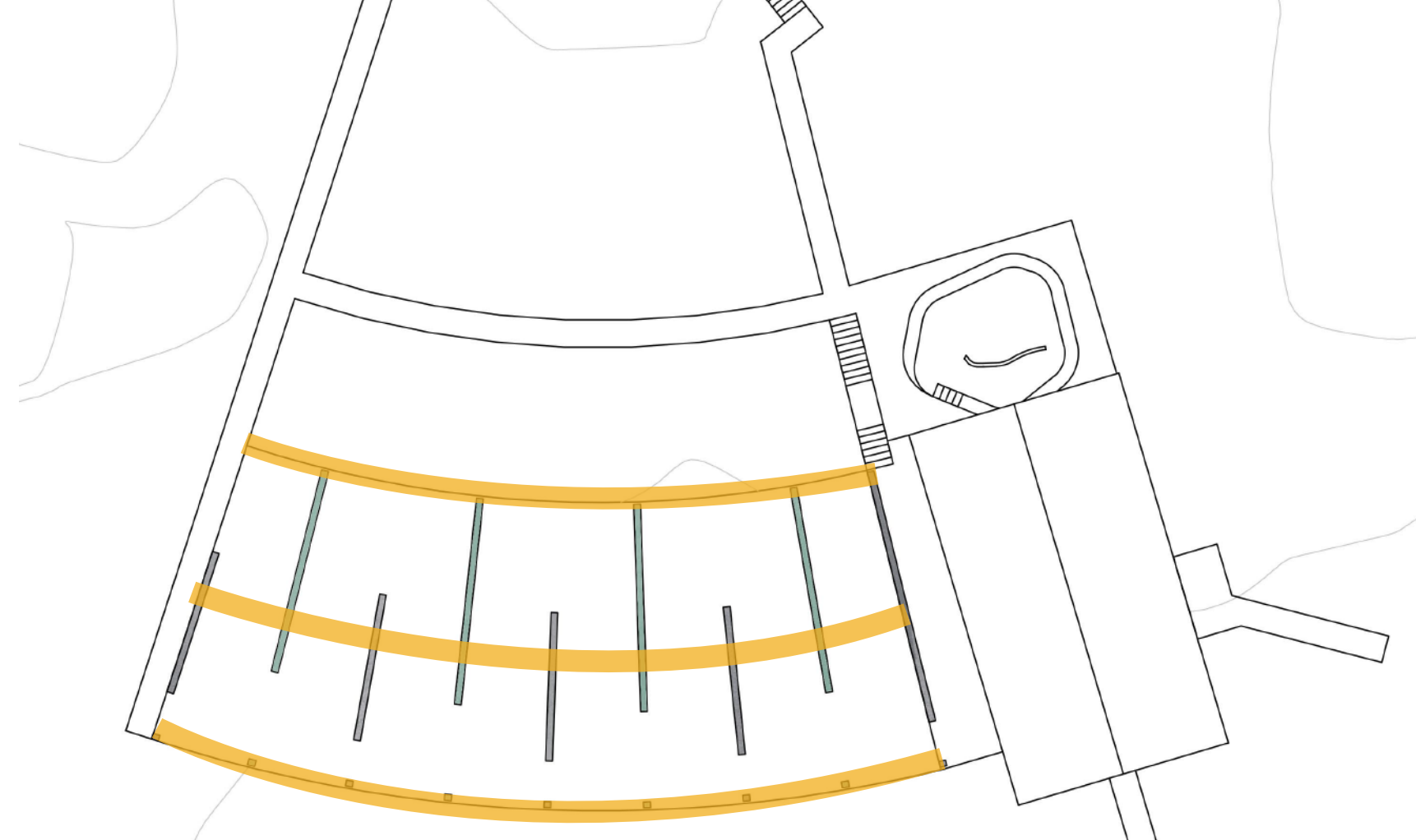
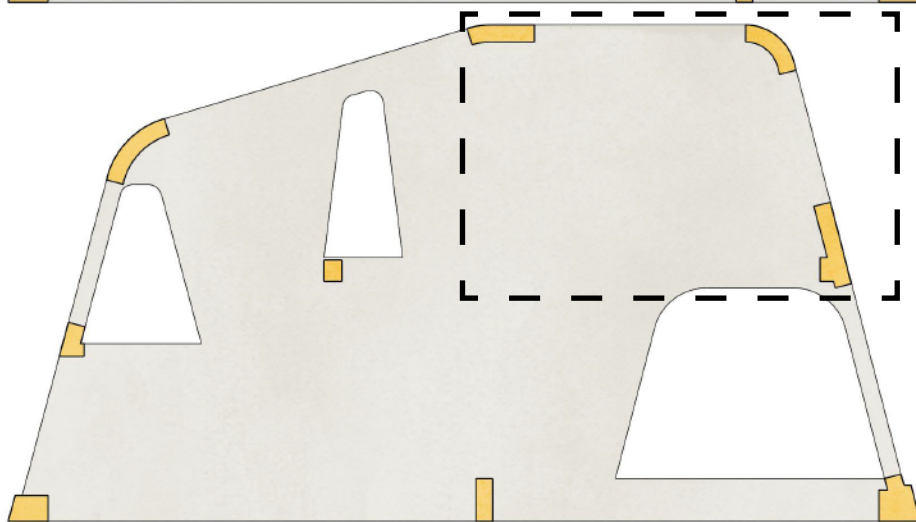
SETTO B



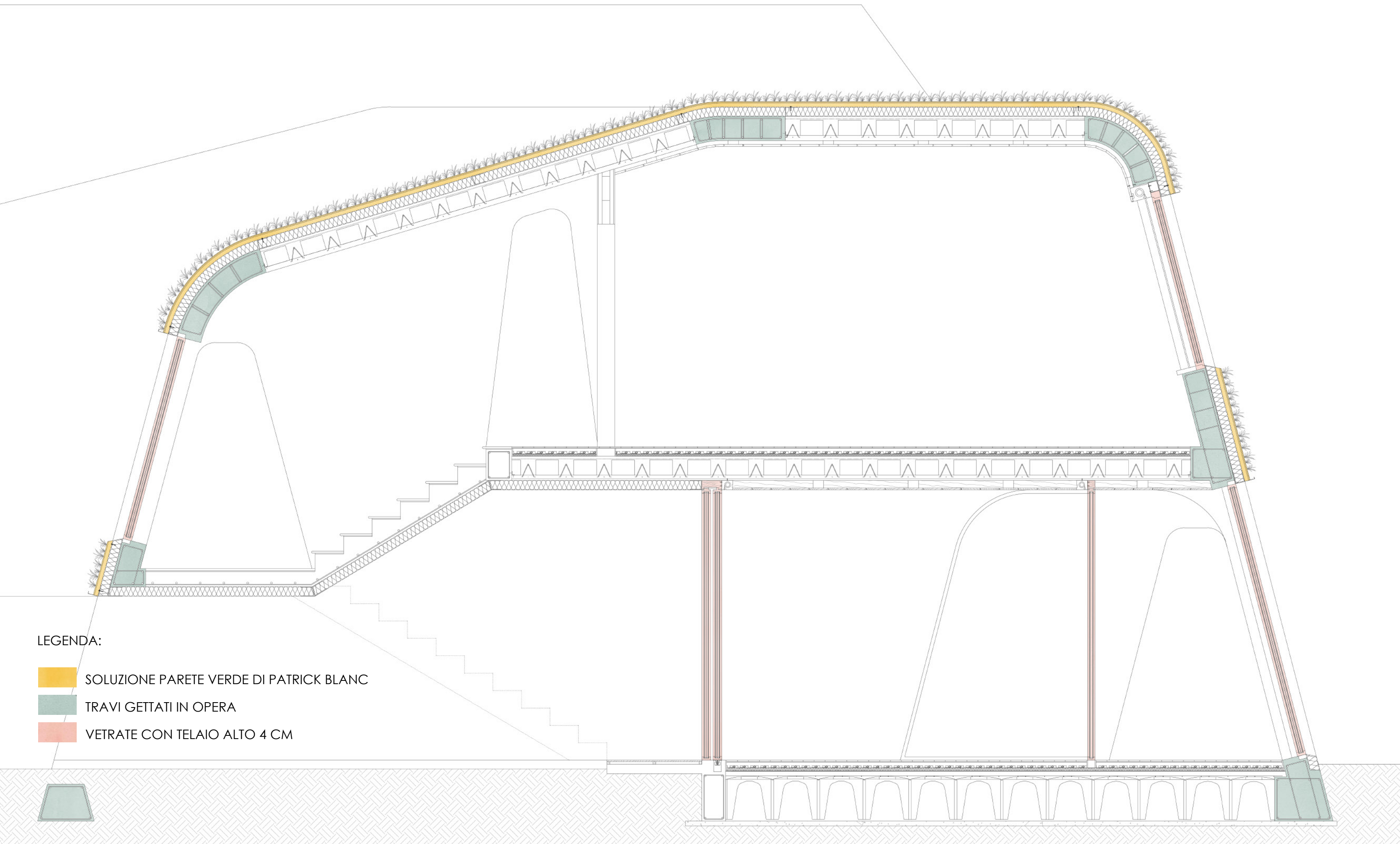
TRAVI A



TRAVI B

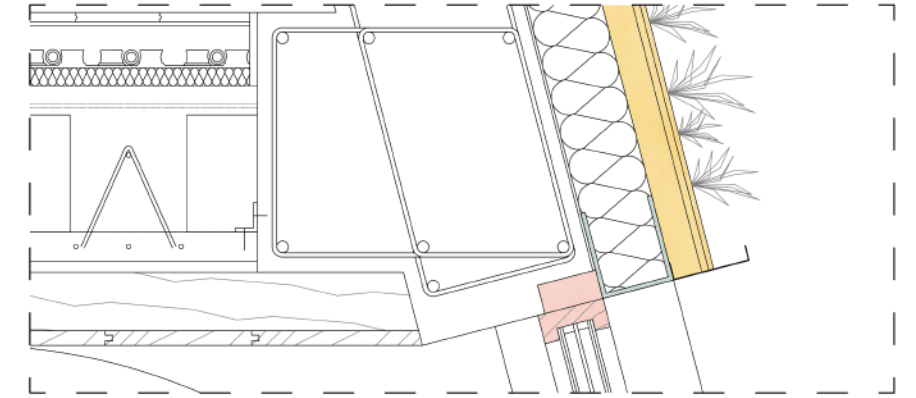
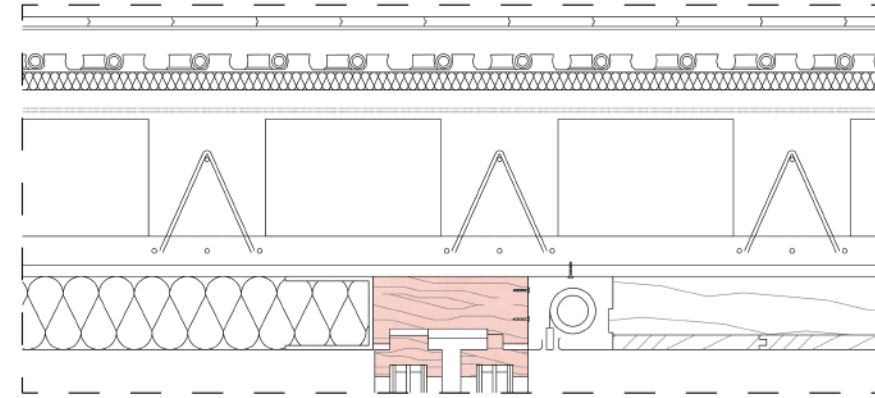
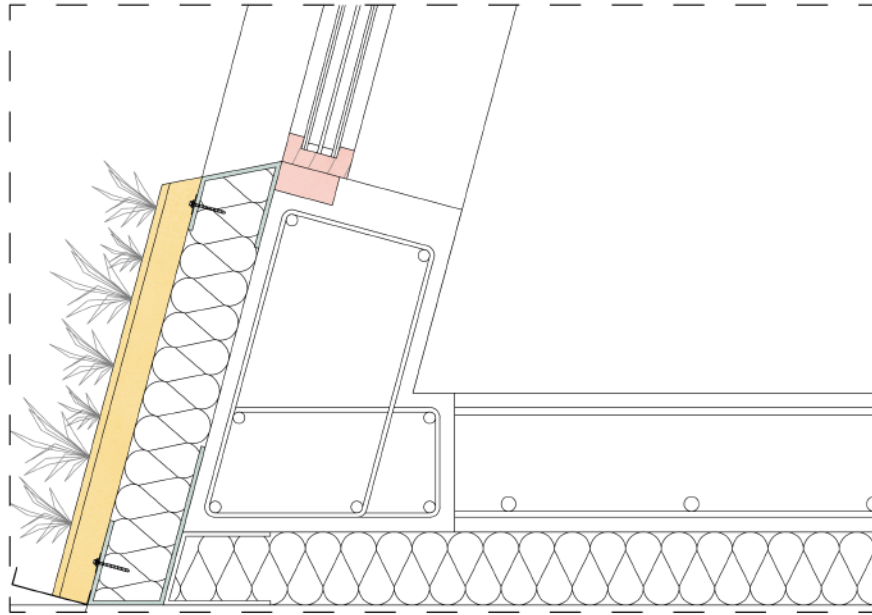
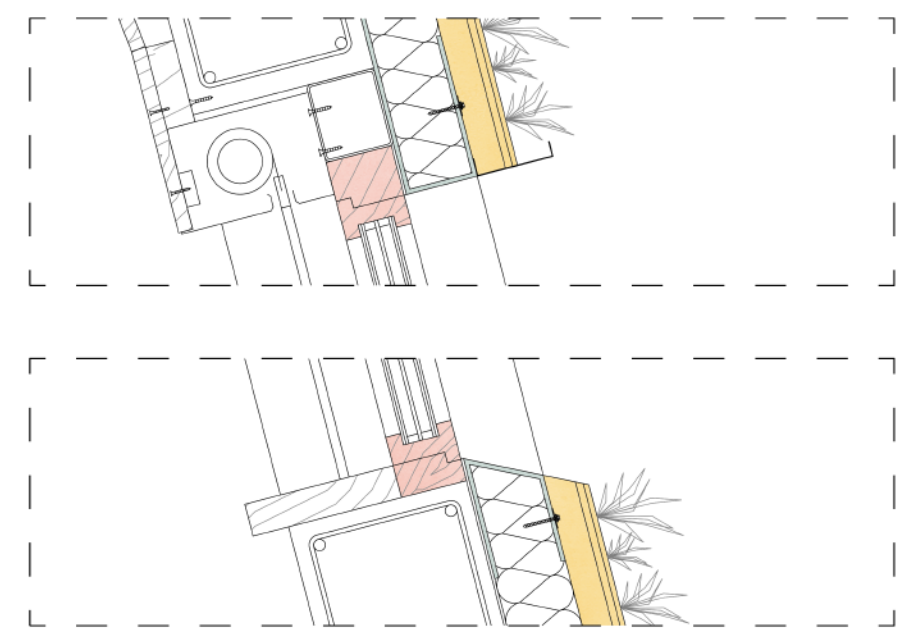
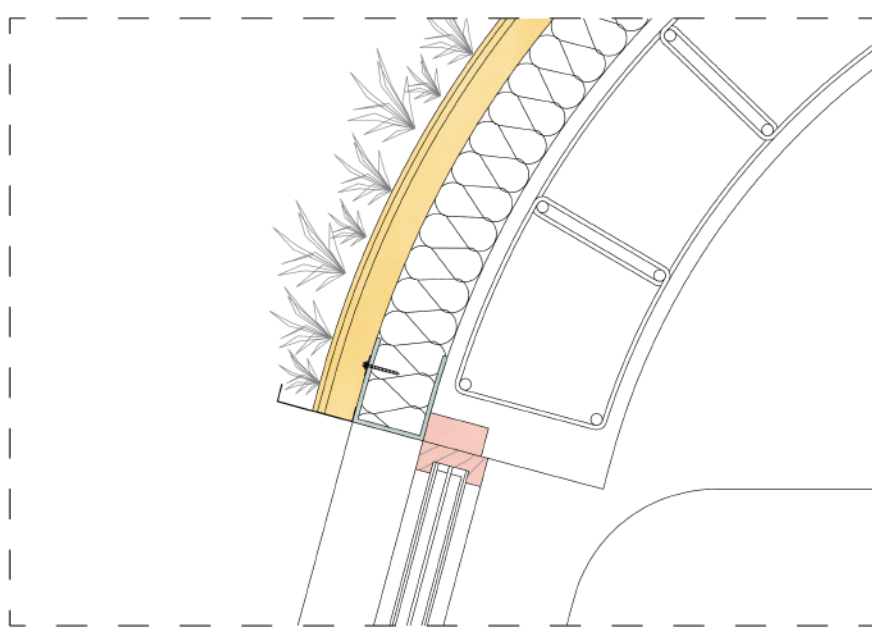


TRAVE DI GIUNZIONE



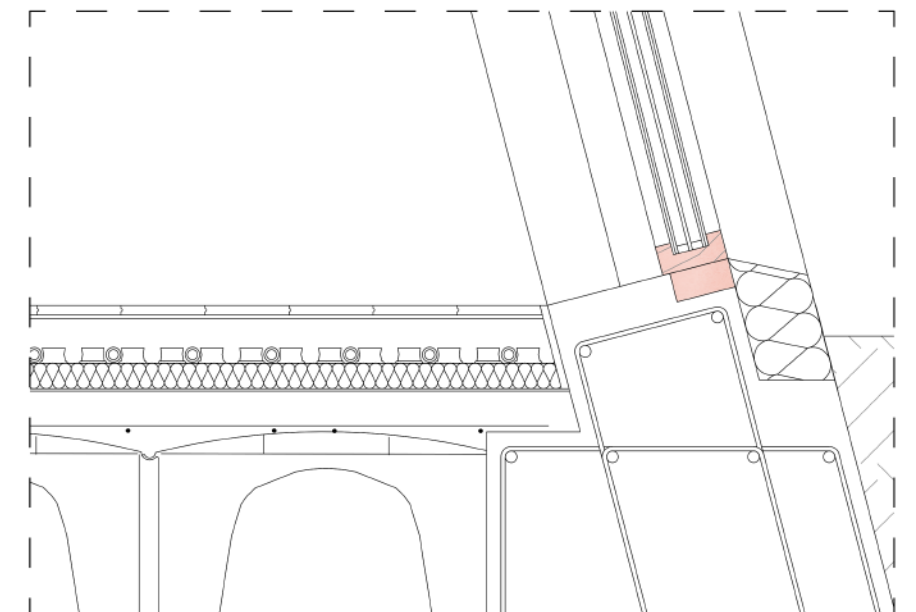
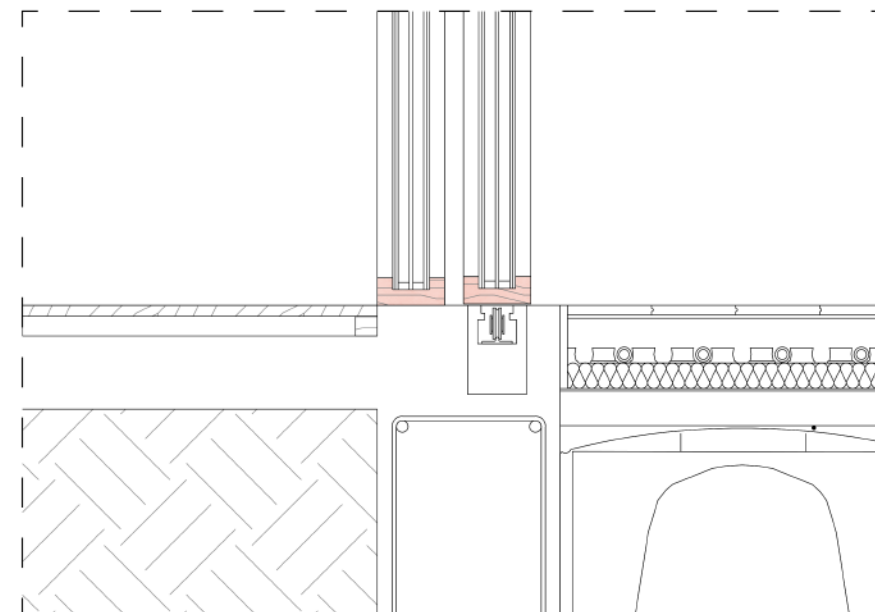
LEGENDA:

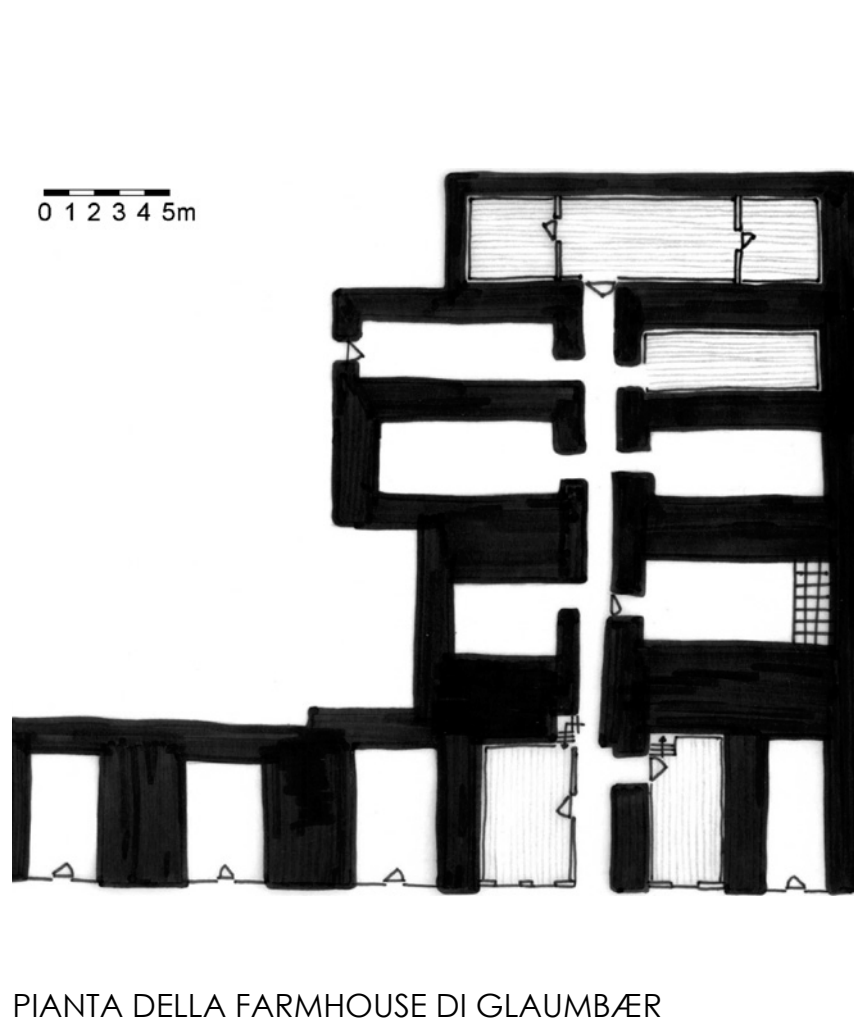
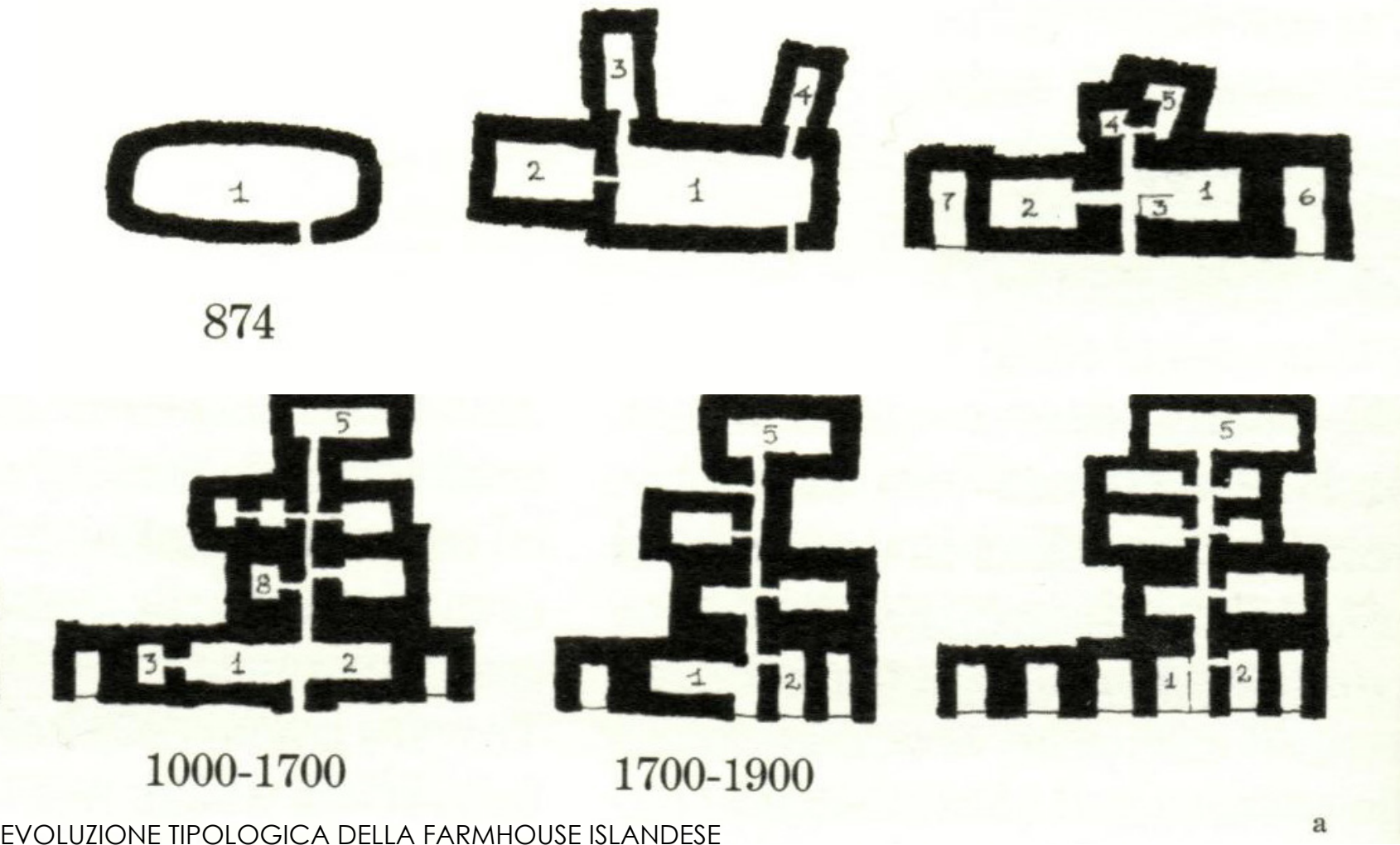
- SOLUZIONE PARETE VERDE DI PATRICK BLANC
- TRAVI GETTATI IN OPERA
- VETRATE CON TELAIO ALTO 4 CM

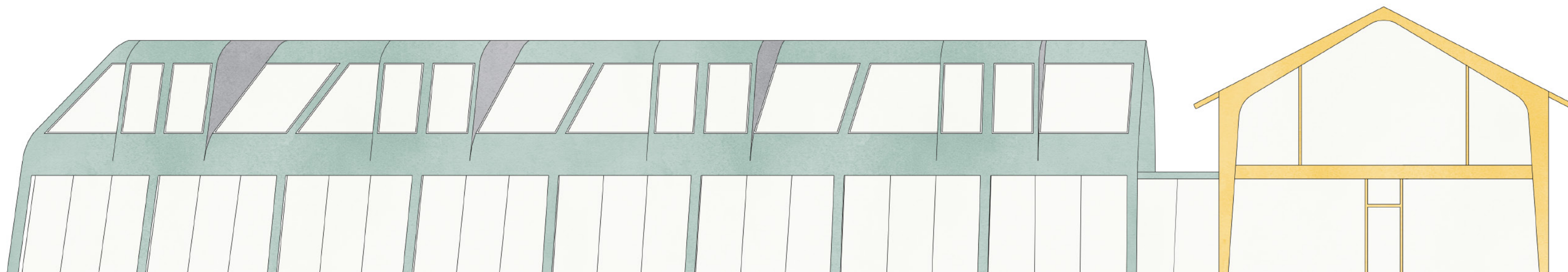


LEGENDA:

- TUBOLARE DA 4 CM
- FOGLIO DI PVC
- STRATO IMPERMEABILIZZANTE DI POLIURETANO
- TASCHE IN FELTRO
- INFISSO VASISTAS
- INFISSO FISSO
- INFISSO SCORREVOLE







LEGENDA:

- LEGNO
- COPERTURA VERDE
- FINITURA AGGREGATO LOCALE
- VETRO

